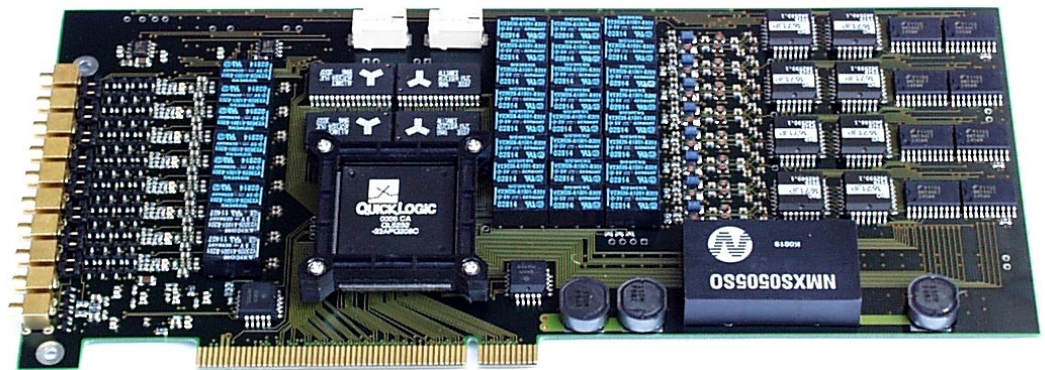
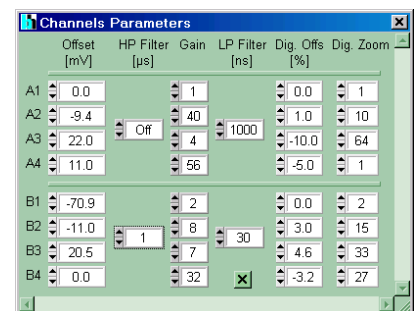
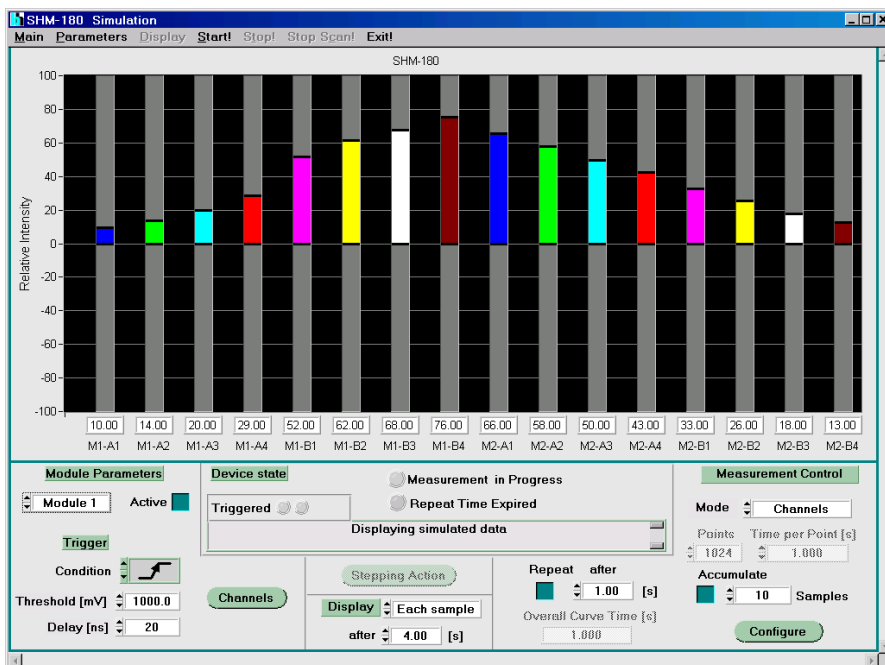


8 Channel Sample & Hold Module SHM-180

Parallel sampling of signals from PMT arrays, multi-anode PMTs, or photodiode arrays

- ◆ 8 parallel sampling channels in one SHM-180 module
- ◆ Up to 32 channels in four parallel SHM-180 modules
- ◆ On-board sample delay generator
- ◆ Low noise due to selectable input filtering
- ◆ Wide, adjustable input voltage range
- ◆ 12 bit single-shot conversion accuracy
- ◆ Accumulation of up to 65.535 samples
- ◆ Accumulation rate up to 1 MS / s
- ◆ Operation software for Windows 95, 98, NT4 and 2000

New Product



Becker & Hickl GmbH
Nahmitzer Damm 30
12277 Berlin, Berlin
Tel. +49 / 30 / 787 56 32
Fax. +49 / 30 / 787 57 34
email: info@becker-hickl.com
www.becker-hickl.com



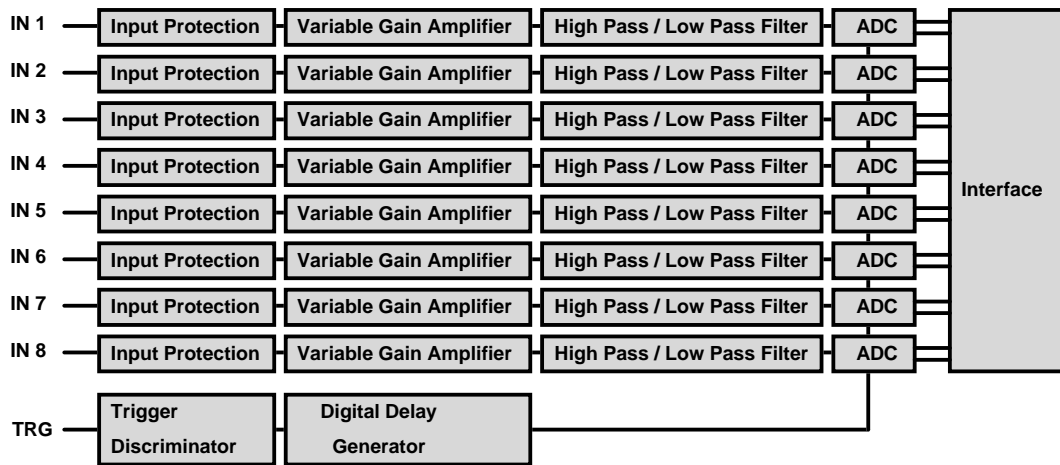
US Representative:
Boston Electronics Corp
tcspsc@boselec.com
www.boselec.com



UK Representative:
Photonic Solutions PLC
sales@psplc.com
www.psplc.com

8 Channel Sample & Hold Module SHM-180

System Architecture



Signal Channels

Input Impedance	1 k Ω or 50 Ω , jumper selectable
Input Coupling	DC or AC, jumper selectable
Input Connectors	MCX
Low Pass Filter	30 ns - 100 ns - 300 ns - 1 μ s
High Pass Filter	1 μ s - 10 μ s - 100 μ s - 'off'
Channel Gain	1 to 56
Full scale input voltage	\pm 45 mV to \pm 2.5V
Max. Sample Rate	1 MS/s
ADC Resolution	12 bit

Trigger Input

Input Impedance	50 Ω
Input Coupling	DC
Input Connector	MCX
Trigger Threshold	-1 V to +1 V
Min. Trigger Pulse Width	1 ns
Max. Trigger Input Frequency	100 MHz
Max. Trigger Rate	1 MHz

Sample Delay Generator

Delay Range	0 to 655 μ s
Delay Step Width	10 ns
Delay Jitter	2.5 ns
Delay Stability	< 50 ppm

Multi Module Systems

Number of modules operable parallel	4
-------------------------------------	---

Operation Environment

Computer System	PC Pentium
Bus Connector	PCI
Power Consumption	approx. 10 W at +5V
Dimensions	PCI card, 235 x 110 mm

Related Products and Accessories

PMT modules, pin and avalanche photodiode modules, integrating photodiode modules, preamplifiers, step motor controllers, delay generators, programmable pulse generators, ps Diode Lasers, gated and time-correlated photon counters, photon-multiscalers. To control detectors and shutters please see DCC-100 detector controller. Please download or call for individual data sheets and manuals.



Becker & Hickl GmbH
 Nahmitzer Damm 30
 12277 Berlin, Berlin
 Tel. +49 / 30 / 787 56 32 Fax +49 / 30 / 787 57 34
 www.becker-hickl.com info@becker-hickl.com

Boston Electronics Corporation
 91 Boylston Street, Brookline.
 Massachusetts 02445 USA
 Tel: (800) 347 5445 or (617) 566 3821, Fax: (617) 731 0935
 www.boselec.com tcspc@boselec.com

