

OPTISPEC Multidimensional TCSPC analysis

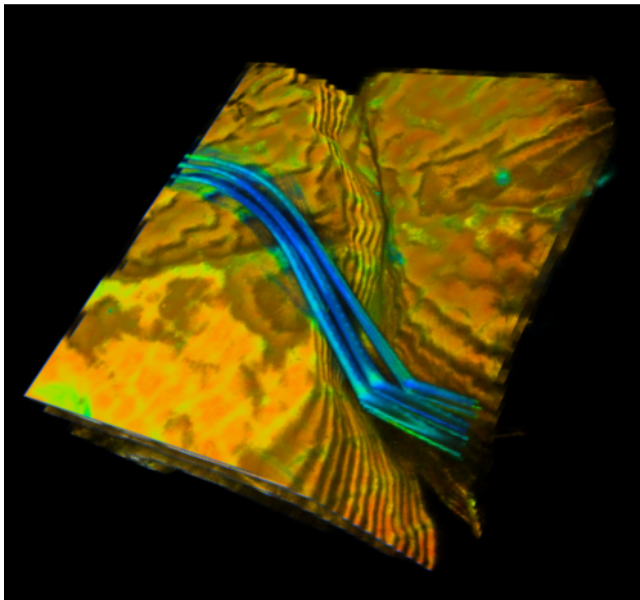
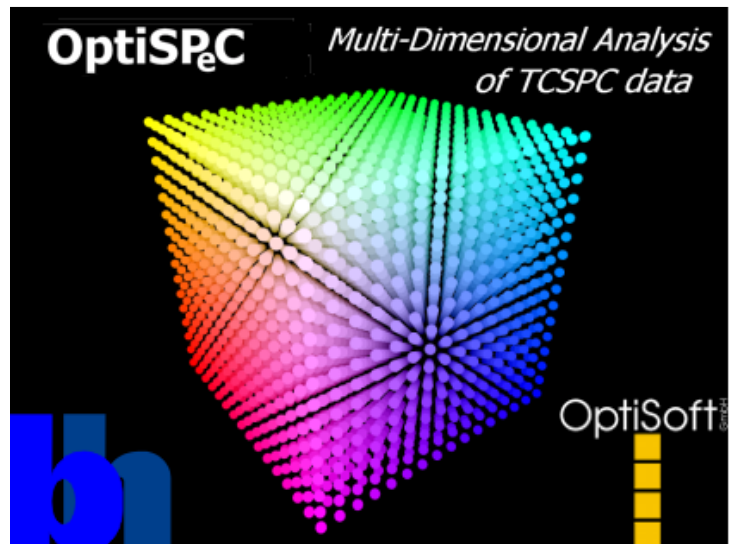
Analysis software for bh's Fast Multi-Dimensional TCSPC Data

Analysis methods

- Multiexponential Decay
- Anisotropy Decay
- FRET Analysis
- Spectral Lifetime Analysis
- Gated Intensity

Data exchange

- Multi-file import of bh's sdt data
- Data transfer from SPCM software
- Export of analysis results to ASCII
- Export to ImageJ



Other features

- 3D image sequences (Z-Stack FLIM)
- High-resolution images by FIFO imaging
- Compressed storage of measurement data
- Batch processing of multiple analysis approaches

Platforms

State-of-the art user interface with freely resizable multi-windows for XP/VISTA and Windows 7™.

System Requirements

High performance PC, 4 GByte RAM



Becker & Hickl GmbH
Nahmitzer Damm 30
12277 Berlin, Germany
Tel. +49 30 787 56 32 Fax +49 30 787 57 34
info@becker-hickl.com www.becker-hickl.com

Quick overview of main features

Create projects with series of measurements

User selectable analysis methods

Overview of images in all channels

Color coded parameter distribution of all channels

Complete list of all analysis attempts in the project

Get a quick overview of measurement parameters and results of the analysis

Easy and direct access to other settings like image size, color range etc.

All conditions for the fit listed clearly

Fix and unfix parameters for calculation

Explanatory comment for every parameter

Indication of type and state of analysis approaches

Activation and deactivation of specified channels

User combinable list of channels to be analysed

Integration of measured IRF data

Display of up to 16 decay curves and fit traces simultaneously

Side-by-side display of results of several analysis approaches

Channel histogram of parameter results

